

Ultra-low Platform Slim Lifter

HLSB Mechanical Lift (Ball Screw, Electric Type)

Load capacity: 221 lb

It's possible to directly place a hand-pushed cart or a flat cart currently in use on top of the lift. Work can be more efficient since there is no need to pile up items over again on the table lift.

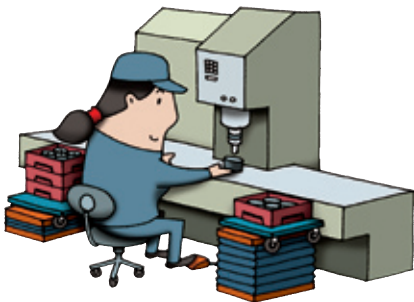
Major features of the HLSB Series

- Ultra-low platform
- Hydraulic cylinder
- Stand-alone unit
- Foot switch cord: 2 m
- High-pressure hose: 2 m
- Power cord: 4 m (E-type)

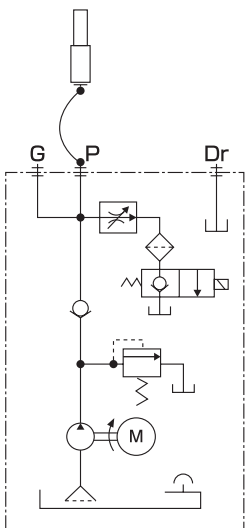
Major specifications

Oil used Turbine oil: ISO VG22 (H-type)
: ISO VG32 (E-type)

* When the table is raised from the lowest position to the highest position, the table shifts up to 27 mm in the longitudinal direction (direction of L).

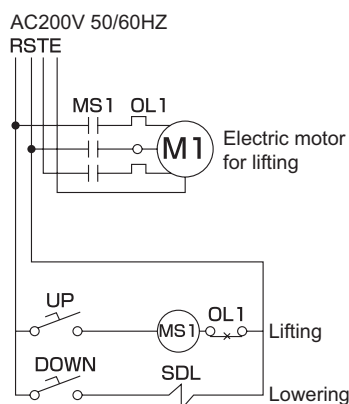


Hydraulic circuit diagram



Cylinder quantity varies depending on the model.

Electric circuit diagram

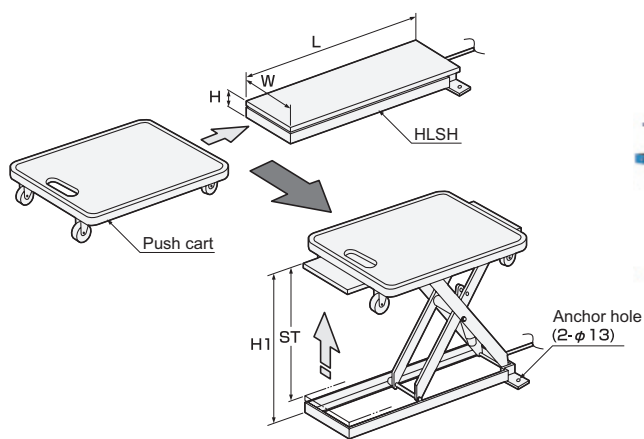


Recommendation



HLSB-100-2007

Note) After the lifter powers up, the lifter remembers the maximum and minimum position based on the first signals of the limit switch. On the succeeding operation, the lifter will stop at about 5 mm lower than the maximum position during lifting and about 3 mm higher than the minimum position when lowering.



Lift adjustment and work optimization are aimed for according to the circumstances.



Unit: inch

	Model	Load capacity	Table dimensions W x L	Stroke (ST)	Table height (H to H1)	Lifting duration (in seconds)	Lowering duration (in seconds)	Output	Deadweight
Electric ball screw type	HLSB-100-2007	221 lb	7.9×27.6	20.1	3.1 to 23.2	12	12	Single-phase 100 V 70 W	62 lb
	HLSB-100-2507		9.8×27.6						66 lb
	HLSB-100-3007		11.8×27.6						71 lb
	HLSB-100-2009		7.9×35.4	25.6	3.1 to 28.7	15	15		75 lb
	HLSB-100-2509		9.8×35.4						79 lb
	HLSB-100-3009		11.8×35.4						84 lb

□ IPM motor usage □ maximum usage frequency: 30 times per hour